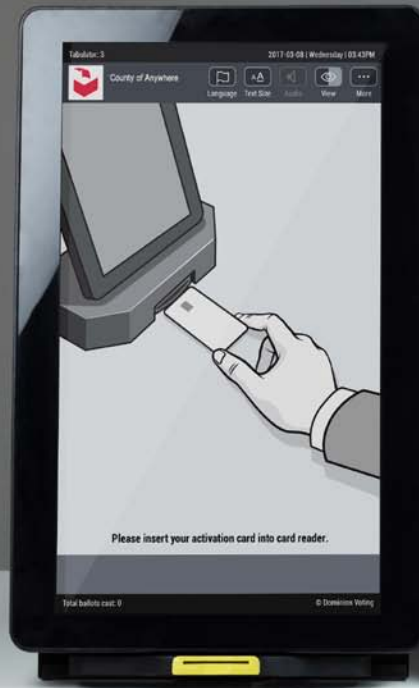


IMAGECAST® X | BMD



**Ballot Marking Device
that prints a paper ballot
after a voter marks their
selections using the
touchscreen.**



The ImageCast® X can be configured as a Ballot Marking Device (BMD), which is paired with a commercially available, compact laser printer that prints a summary of the voters selections. No votes are stored on the ImageCast® X when in the BMD configuration.

Get in touch

1.866.654.VOTE (8683)
sales@dominionvoting.com
www.dominionvoting.com



FEATURES & BENEFITS



SIMPLE

Familiar printing technology for both poll workers and voters. Simple process for poll worker to reload paper.



EFFICIENT

BMD printer uses standard 8.5" x 11" non-proprietary paper. Unused paper can be saved for later election events.



FLEXIBLE

Paper ballots can be scanned on any ImageCast® tabulator in the voting location or central office.

Get in touch

1.866.654.VOTE (8683)
sales@dominionvoting.com
www.dominionvoting.com

